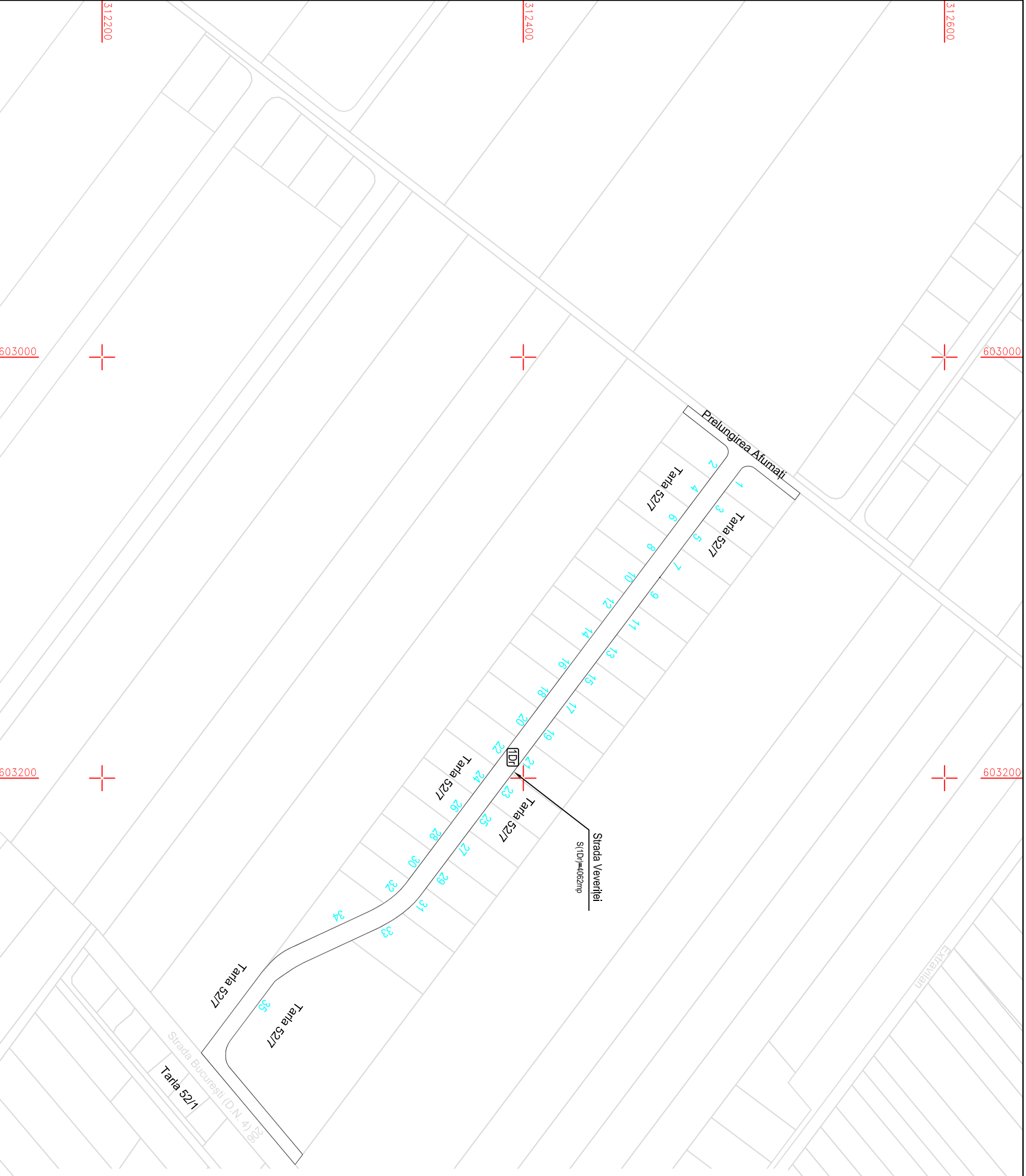


Extremă



INVENTAR DE COORDONATE-SISTEM DE PROIECTIE STEREOGRAFIC 1970  
Parcela (ID) Strada Veveritei

Nr. Pct.	Coordonate pe/dre coltur	Lungimi latari D(I+1)	
Y [m]	X [m]		
1	603104,589	312464,801	17,045
2	603118,214	312454,560	17,061
3	603131,852	312444,309	16,332
4	603144,908	312434,497	16,340
5	603157,969	312424,679	16,360
6	603171,047	312414,849	16,340
7	603184,109	312405,032	17,053
8	603197,741	312394,766	17,044
9	603211,365	312384,545	17,043
10	603224,989	312374,305	17,044
11	603238,613	312364,064	17,044
12	603252,238	312353,824	4,734
13	603265,862	312343,583	3,877
14	603279,486	312333,343	3,993
15	603293,110	312323,102	3,868
16	603306,734	312312,861	3,417
17	603320,358	312302,620	1,988
18	603333,982	312292,379	1,988
19	603347,606	312282,138	4,963
20	603361,230	312271,897	1,908
21	603374,854	312261,656	13,781
22	603388,478	312251,415	5,832
23	603402,102	312241,174	19,392
24	603415,726	312230,933	1,771
25	603429,350	312220,692	1,984
26	603442,974	312210,451	2,216
27	603456,598	312200,210	2,478
28	603470,222	312189,969	4,131
29	603483,846	312179,728	3,541
30	603497,470	312169,487	35,137
31	603511,094	312159,246	2,077
32	603524,718	312149,005	1,849
33	603538,342	312138,764	1,682
34	603551,966	312128,523	1,568
35	603565,590	312118,282	1,903
36	603579,214	312108,041	1,689
37	603592,838	312097,800	1,277
38	603606,462	312087,559	1,330
39	603620,086	312077,318	54,458
40	603633,710	312067,077	6,001
41	603647,334	312056,836	69,305
42	603660,958	312046,595	48,213
43	603674,582	312036,354	6,149
44	603688,206	312026,113	2,015
45	603701,830	312015,872	1,915
46	603715,454	312005,631	1,822
47	603729,078	311995,390	1,735
48	603742,702	311985,149	1,566
49	603756,326	311974,908	1,484
50	603769,950	311964,667	1,928
51	603783,574	311954,426	1,928

S(UD)=4062mp	P=1033,757m		
52	603279,596	312291,786	20,415
53	603270,986	312310,296	18,467
54	603263,198	312327,041	1,564
55	603262,499	312328,440	4,531
56	603260,283	312332,392	1,656
57	603259,404	312333,796	1,122
58	603258,783	312334,731	2,944
59	603257,076	312337,129	3,192
60	603255,039	312339,587	3,203
61	603252,813	312341,890	3,173
62	603250,393	312343,942	2,996
63	603248,001	312345,746	17,099
64	603246,334	312345,021	16,329
65	603221,282	312365,833	17,065
66	603207,640	312376,086	17,042
67	603194,017	312386,326	17,043
68	603180,393	312396,566	17,045
69	603166,768	312406,807	17,043
70	603153,144	312417,047	17,044
71	603139,520	312427,288	17,043
72	603125,895	312437,527	17,045
73	603112,270	312447,769	17,042
74	603098,647	312458,009	17,043
75	603085,023	312468,248	17,045
76	603071,398	312478,489	17,042
77	603057,775	312488,729	12,824
78	603044,150	312498,970	0,862
79	603030,525	312509,211	0,825
80	603016,900	312519,452	0,799
81	603003,275	312529,693	0,780
82	602989,650	312539,934	0,768
83	602976,025	312550,175	0,765
84	602962,400	312560,416	0,774
85	602948,775	312570,657	0,833
86	602935,150	312580,898	25,343
87	602921,525	312591,139	4,002
88	602907,900	312601,380	67,525
89	602894,275	312611,621	3,999
90	602880,650	312621,862	24,291
91	602867,025	312632,103	0,947
92	602853,400	312642,344	0,889
93	602839,775	312652,585	0,900
94	602826,150	312662,826	0,883
95	602812,525	312673,067	0,854
96	602798,900	312683,308	0,816
97	602785,275	312693,549	0,788
98	602771,650	312703,790	13,315
99	602758,025	312714,031	17,044
100	602744,400	312724,272	17,061
101	602730,775	312734,513	17,061
102	602717,150	312744,754	17,025

603400  
603200  
603000  
603400  
603200  
603000

**SISTEM DE PROIECTIE STEREOGRAFIC 1970**

**BENEFICIAR: COMUNA FRUMUȘANI**

Adresă: Comuna Frumușani, CALĂRAȘI

<b>SC KOMORA ENGINEERING SRL</b>		<b>kemera</b>	
J51/59/2014; CUI RO32815436		engineering	
Sediul: Aleea Centrală nr. 1, etaj I, scara 119-120, CALĂRAȘI			
SPECIFICAȚIE	NUME	SEMNĂTURA	
ÎNTOCMIT	Cristina MĂRĂNDESCU		
VERIFICAT	Ing. Dănuța Florica BASOTĂ		
Scara	1:2000	PLAN DE SITUAȚIE	
DATA	2018	STRADA VEVERTEI	
		Număr cadastral 7736	
		Sat Pădurișu, comuna Frumușani,	
		județul Călărași	
		Planșa nr.	1
		Faza	